

Greater transparency for higher productivity:  
The web-based information & management platform COATIFY  
allows the intelligent visualization of coating systems.

More systems

**COATIFY**  
READY



### Increase your productivity by up to 5%

Tight process control, short reaction times and proactive service measures can increase your system availability and productivity. Your quality is improved and unit costs are reduced.



#### Perfect process overview

See the performance data of all coating systems in your company at a glance - on a clear user interface with descriptive diagrams and graphs.



#### Access from anywhere and anytime

You can view visualized key figures on your smartphone, tablet or PC from anywhere in the world - 24 hours a day, 365 days a year.



#### Reliable notification function

In the case of system messages, such as pending maintenance or deviations from adjustable limit values, you receive an optional e-mail notification in addition to information via the platform.



## Your advantages with COATIFY at a glance:



### Production

Due to the ever-increasing competitive environment, you as production manager have the challenge of continuously optimizing production costs. COATIFY offers everyone involved in the production process the opportunity for extremely reliable productivity monitoring by constantly providing important production data.



### Quality Control

As quality manager, you have a great interest in ensuring that the quality of coated workpieces is always at a high level in order to avoid rework and to meet the increasing demands of your customers. With COATIFY you can view important key figures regarding production quality at a glance and take any necessary measures. This way, optimum results can be achieved.



### Process Management

With COATIFY, you as a process manager can call up targeted reports from anywhere on the development of key performance indicators in the coating process, such as coating time or number of coated parts. You can also contrast these key figures with comparative values and gain valuable insights to optimize your processes and ultimately meet your business objectives.



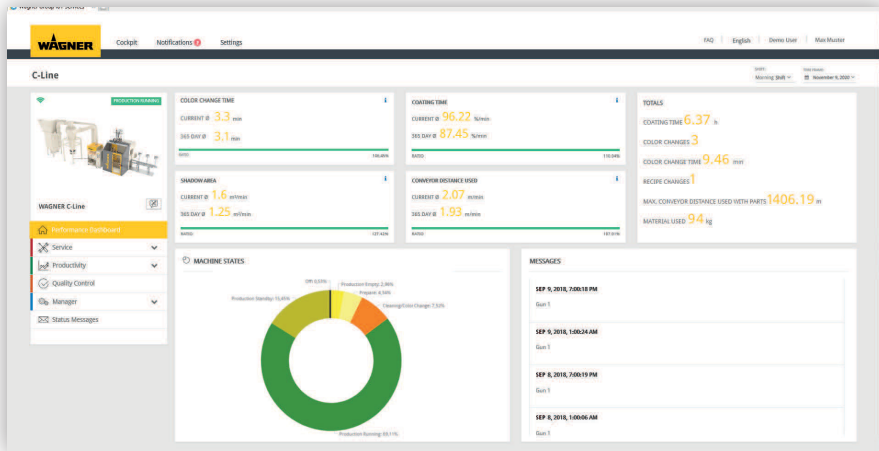
### Service

With the notification function, COATIFY provides you with timely information and warnings if wear parts need to be replaced during the coating process or if important maintenance is due. You can plan service measures much better and if necessary the WAGNER service team can even perform remote maintenance. High quality and system availability are ensured and productivity is increased.



### Selected highlights of the COATIFY platform:

You can find many more functions at [www.coatify.net](http://www.coatify.net)



### COATIFY.Performance Dashboard

Detailed, clearly structured and attractively presented reports for each integrated system. Current characteristic values such as coating time, system status, number of coated parts or conveyor section can be displayed and contrasted with characteristic values from comparative periods.

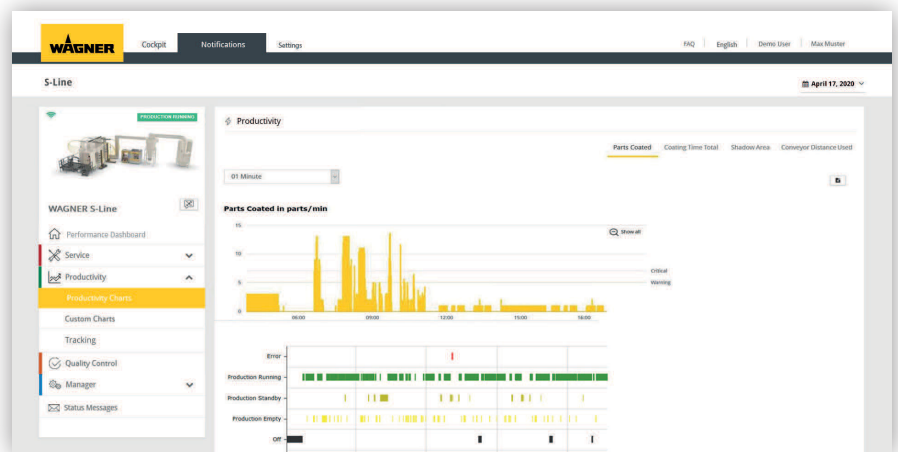
An evaluation is possible in freely definable time periods, for example per work shift.

System messages and warnings also appear on the dashboard to inform you about necessary system adjustments. This allows you to react in time and ensure your system availability.

### COATIFY.Productivity

The performance monitoring of your system, including data on machine status, number of coated parts per minute, coating times and much more, is presented in the form of clear diagrams. These data reports can be exported as separate files.

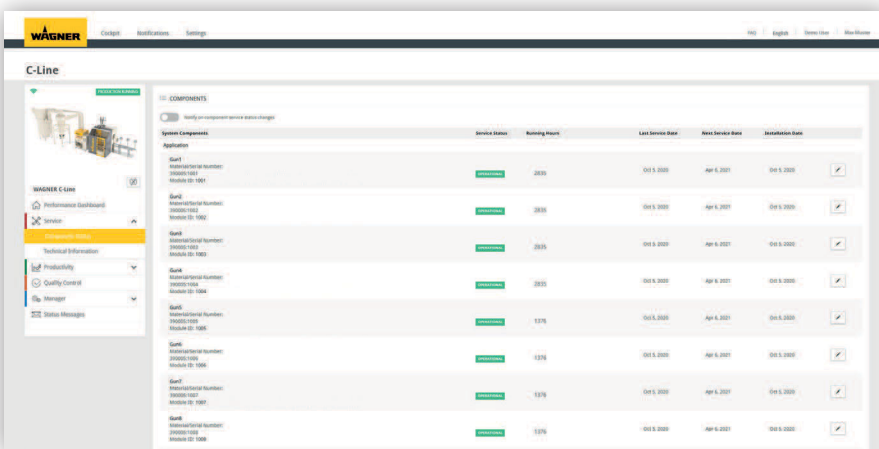
Customize your own production data analysis over freely selectable periods of time (for example minutes, work shifts or years). The recording of production orders, recipes and coating material is optional.



### COATIFY.Service

Directly on the platform, you receive current information about the operating and maintenance status of the individual components of your system, including a logbook. Optionally, you can also be notified by e-mail.

In this way you can plan service measures in good time, increase your system availability and save costs. If necessary, a ticket can be sent immediately to the WAGNER service team. Remote maintenance of your system can be carried out on demand.



### Choose the option that suits your needs:

Functions	COATIFY.light	COATIFY
Provision of analysis & visualization data (period) 1 year Continuously	1 Year	Continuously
COATIFY.Cockpit, COATIFY.Performance Dashboard, COATIFY.Productivity, COATIFY.Service, COATIFY.Quality Control, COATIFY.Manager	•	•
Application data (high voltage, air, etc.)	•	•
Online operating & service manuals	•	•
Layer thickness display with Layer Check	•	•
Service ticket	•	•
Recipe names & recipe numbers		•
Adjustable limit values with notification function		•
Job tracking (link: job number, recipe, coating material)		•
Product carrier registration		•
Creation of individual evaluations (custom charts)		•
Part detection & shadow area		•

### Order COATIFY Now:



#### Your data is safe and belongs to you.

All data from your systems belongs to you and we do not sell your data to third parties. Once your COATIFY contract ends, all data is deleted from the platform.

Before this happens, you still have the possibility to save your data securely.

#### Wagner Spray Tech Corporation - Industrial Solutions

**Plymouth, MN**  
 1770 Fernbrook Lane  
 Plymouth, MN 55447  
 T 800.473.2524  
 F 630.503.2377

**Louisville, CO**  
 337 South Arthur Ave  
 Louisville, CO 80027  
 T 888.820.4498  
 F 303.438.5708

[www.wagner-group.com/us/industry](http://www.wagner-group.com/us/industry)

#### The security concept of COATIFY:

Industry standard for end-to-end encryption. SSL encryption for access to the COATIFY platform, access via Internet browser (same security standard as e.g. online banking).

Account management (login) via Microsoft Live-ID enables a secure login process. The system architecture ensures a secure administration of your production data.

Data management on a Western European platform. The European guidelines for data protection are strictly adhered to. More detailed information is recorded in formal contracts.